



# Michel's

## CROP CATCHER 3

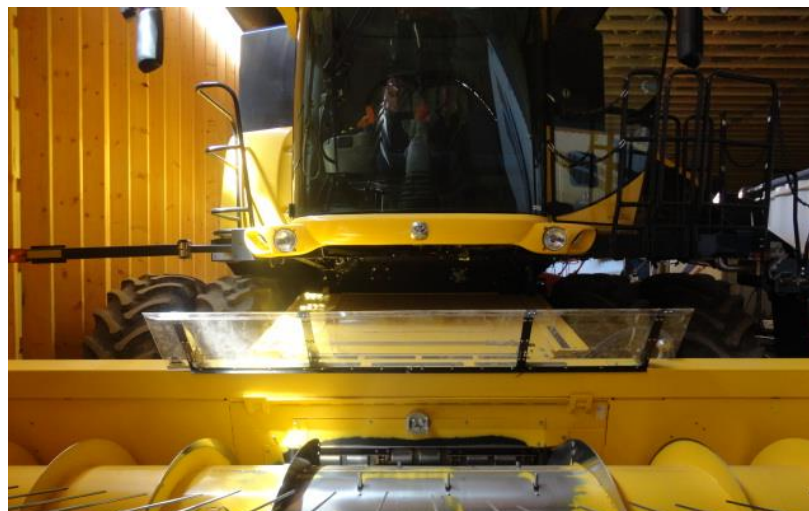
St. Gregor, SK Canada S0K 3X0 (306) 366-2184

MY21

CA Patent # 2761240

US Patent # 8997445 B2

# INSTRUCTION MANUAL



Approximate time to complete installation is 1-1/2" hours for two people

Recommended tools required for installing the Crop Catcher:

-9/16" socket  
-Hammer

-7/16" socket  
-Center Punch

-Ratchet  
-11/32" Drill Bit

-Extension  
-3/8" Drill

-#2 Phillip's Screw Driver  
-Large Flat Screw Driver

**Michel's** Industries, Ltd.

P.O. Box 119

St. Gregor, Saskatchewan

S0K 3X0 Canada

Ph#(306)366-2184 or Fax#(306)366-2145

Unpack and check that all of the parts are with your Crop Catcher:

Item	QTY	Part No.	Description
1	1	0011-000701L	Crop Catcher III Left Panel
2	1	0011-000702	Crop Catcher III Middle Panel
3	1	0011-000701R	Crop Catcher III Right End Panel
4	2	0011-000507R	Mounting Bracket - Right
5	2	0011-000507L	Mounting Bracket - Left
6	4	0011-000504	2 Bend Upright Glass Support
7	1	0011-000506	Glass Support Bracket
8	1	0011-000505	Glass Support Bracket – Offset
9	1	0011-000514	Top Support Inside Bracket
10	1	0011-000515	Top Support Inside Bracket MIR
11	8	0106-000016	3/8" x 1_1/4" Self-Threading Bolt
12	8	0100-001102	3/8" Nylon Hex Nut
13	8	0105-009215	3/8" x 1" Carriage Bolt
14	38	0100-001401	1/4" Flange Lock Nut
15	38	0105-009002	1/4" x 3/4" Carriage Bolt
16	32	0106-140000	10-24 x 1/4" Binder Post Zinc
17	32	0101-001200	1/4" Lock Washer
18	32	0106-140001	#10-24 x 5/16" - Truss Head Phillips/Slot Machine Screw

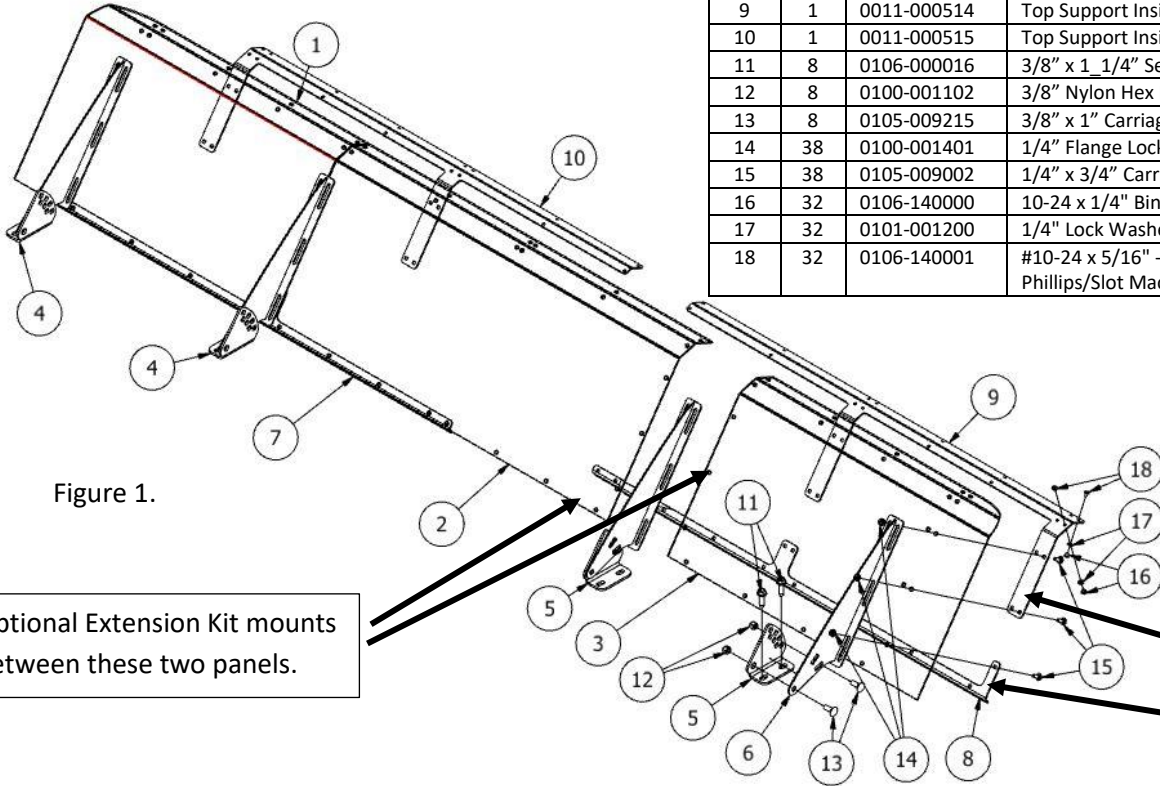


Figure 1.

Optional Extension Kit mounts between these two panels.

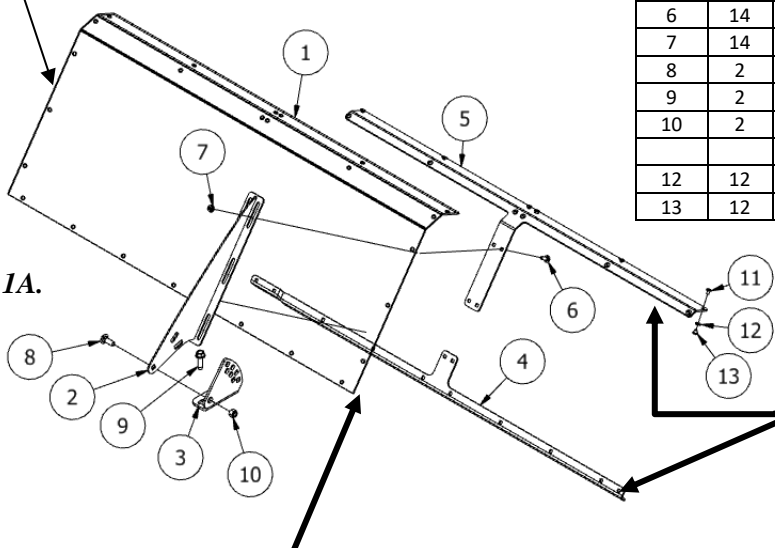
Mount on front of glass panels.

**Optional Extension Kit Parts**

Item	QTY	Part No.	Description
1	1	0011-000702	Crop Catcher III Middle Panel
2	1	0011-000504	2 Bend Upright Glass Support
3	1	0011-000507R	Mounting Bracket - Right
4	1	0011-000508	Extension Support Bracket – offset - part
5	1	0011-000516	Extension Top Support Inside Bracket
6	14	0105-009002	1/4" x 3/4" Carriage Bolt
7	14	0100-001401	1/4" Flange Lock Nut
8	2	0105-009216	3/8" x 3/4" Carriage Bolt
9	2	0106-000016	3/8" x 1_1/4" Self-Threading Bolt
10	2	0100-001102	3/8" Nylon Hex Nut
12	12	0101-001200	1/4" Lock Washer
13	12	0106-140000	10-24 x 1/4" Binder Post Zinc

Left Panel mounts against this side.

Figure 1A.

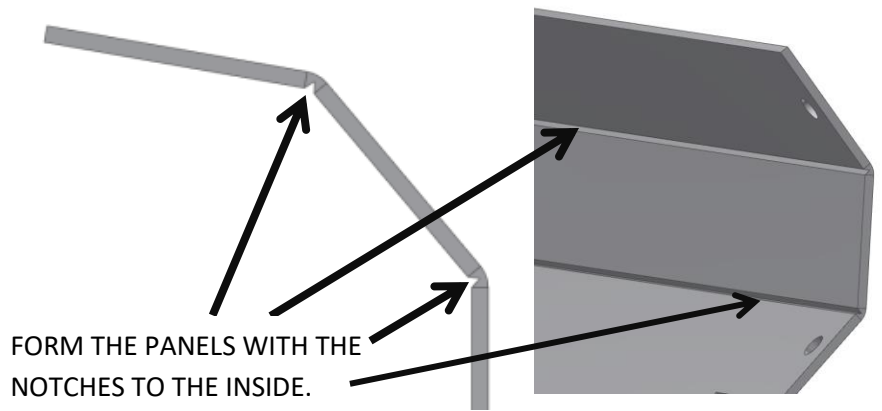


Mount on front of glass panels.

Standard Middle Panel mounts against this side.

## Glass Forming Procedure:

The panels that are supplied with your Crop Catcher have grooves cut into them where they need to be formed. These grooves need to be on the inside of the glass when they are formed. See Pictures. The panels can be formed with your hands. It is important to bend the panels all the way until the edges of the grooves touch. Over bending **WILL NOT** cause damage to the panel. Note: Panels will want to straighten out over time and can be re-bent if needed.



### STEP 1

Bolt the Upright Glass Support Brackets to the Mounting Brackets using two 3/8" carriage bolts. The Upright Glass Support Brackets are mounted on the bent flange side of the Mounting Bracket and the carriage head is also on the bent flange side. Refer to the Figure 3. Clamp the Mounting Bracket to a work bench with the bent flange to the outside. Remove the protective covering on the plastic and wash with soapy water. **Do not use Glass Cleaner to clean the plastic, use the optimal "Dust Away" Plastic Cleaner supplied by Michel's.** Glass cleaner will create unwanted static build up and cause dust to stick to the plastic.

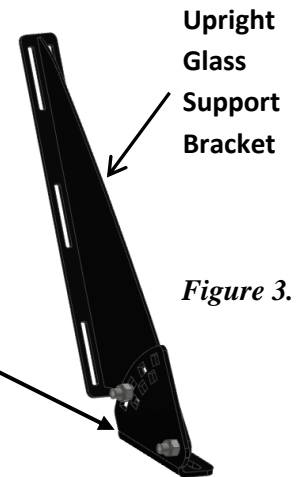


Figure 3.

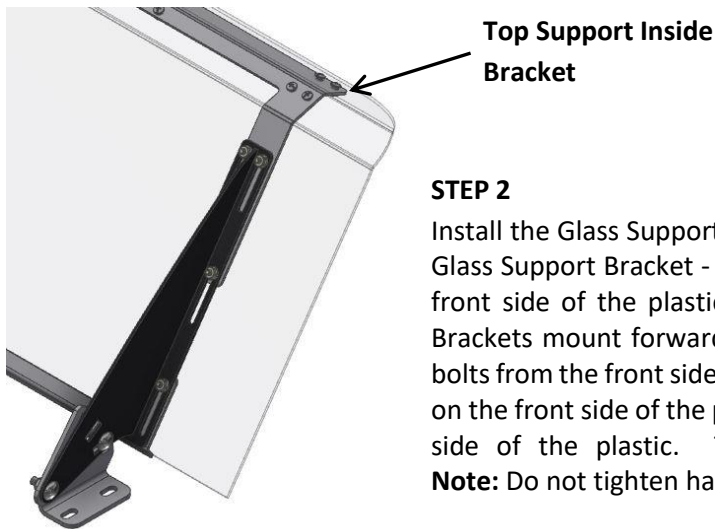


Figure 4.

### STEP 2

Install the Glass Support Brackets across the bottom front of the end panels. The Glass Support Bracket - Offset will be on the left side end panel, looking from the front side of the plastic. See Figure 5. The bent flange on the Glass Support Brackets mount forward, on the front side of the Plastic. Insert the 1/4" carriage bolts from the front side in the square holes. Install the Top Support Inside Bracket on the front side of the plastic and the Upright Glass Support Brackets on the back side of the plastic. The nuts are installed on the back side the panels. **Note:** Do not tighten hardware until completely assembled.

### Step 3

Install the Middle Panel, making sure that the Glass Support Bracket - Offset overlaps and mounts on top of the Glass Support Bracket. See Figure 5. If purchased, install the Optional Extension kit in between the Middle Panel and the Left Outside Panel. Refer to Figure 1A.

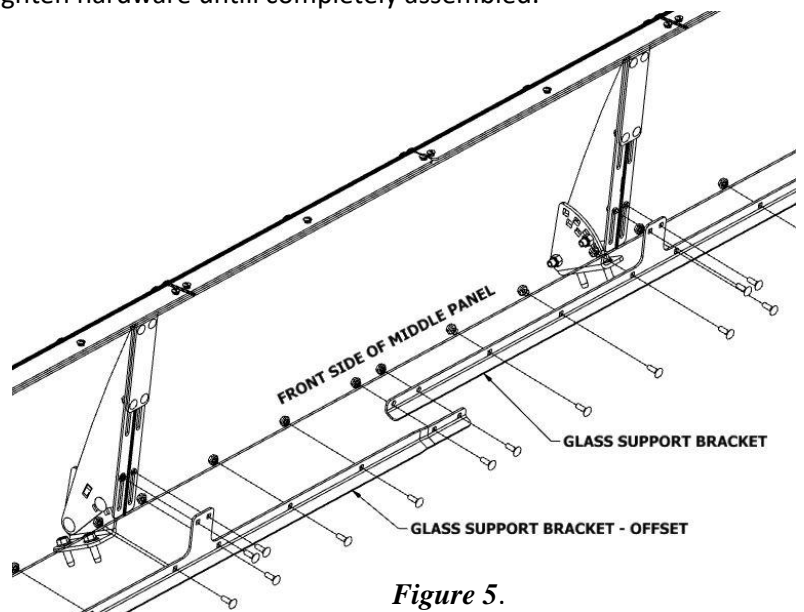


Figure 5.

**STEP 4**

Install the Binder posts into the top of the Panel and the Top Support Inside Bracket. Use a #2 Phillip Screw Driver and a Large Flat Screw Driver to tighten. Insert the Binder Post from the top side and insert the Barrel Nut and Lock Washer from the bottom. Refer to Figure 6.  
**Note:** If the plastic panels do not have all of the holes for the Binder Post and Binder Barrel Nuts, drill a 1/4" hole using the Top Support Inside Brackets as a guide.

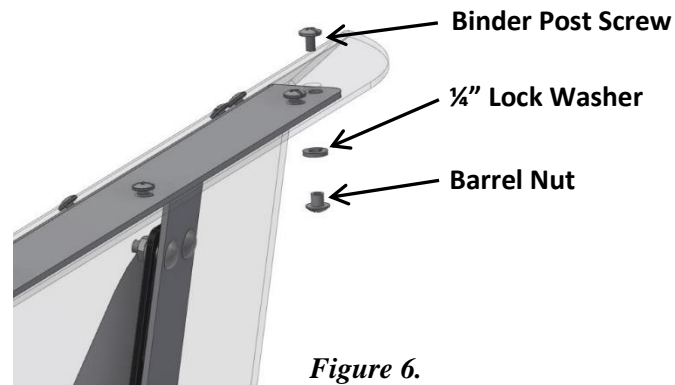


Figure 6.

**STEP 5**

Once the Crop Catcher is all together the bottom carriage bolts can be tightened. Do not over tighten as it may cause damage to the Lexon Glass. It is easier to tighten them if the Crop Catcher is laying on it's face. Leave the Upright Support Brackets loose so the complete assembly can slide up and down.



Figure 7.

**STEP 6**

Center the Crop Catcher on the combine header and Install the mounting brackets flush with the front of the header tubing. Mark the mounting locations with a marker or center punch and drill a 11/32" hole for the 3/8" self-tapping bolts. **Important: Make sure that the hole locations do not drill into the hydraulic reservoir or lines.** It is recommended to use a drill or impact when installing the 3/8" self-tapping bolts. The recommended adjustment for the Crop Catcher II is to have the top between 1"-2" past the center line of the auger. Refer to Figure 8. This will allow maximum coverage while maintaining enough angle to help keep the dust from collecting on the back of the Crop Catcher. Once the uprights are bolted in the desired position, push the glass assembly down and leave a small gap between the header and the Crop Catcher. The carriage head bolts on the Upright Support Brackets can now be tightened to 50in-lbs of Torque. **DO NOT OVER TIGHTEN** as damage may occur to the glass.

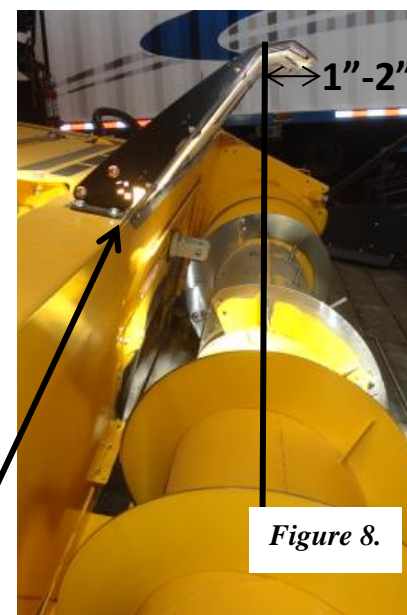


Figure 8.

Small Gap

**To Care for your new Crop Catcher, use a plastic cleaner such as the optimal "Dust Away" Plastic Cleaner supplied by Michel's. Do not use Glass Cleaner.**

*For assistance on your Crop Catcher, please contact Michel's Industries Ltd.*

**Michel's** Industries, Ltd.

P.O. Box 119

St. Gregor, Saskatchewan

S0K 3X0 Canada

Ph#(306)366-2184 or Fax#(306)366-2145