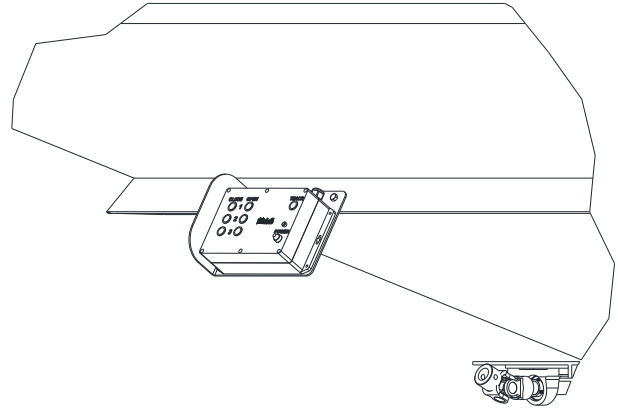


Michel's MIC210 Power Pro Side Chute Opener System

Mount the control box shielding bracket to the angle support on the lead chute of a two-hopper trailer or the middle chute of a three-hopper trailer. Drill 5/16" holes in the angle support using the bracket for a hole-pattern. Place this bracket near where the Power Pro will be installed. Bolt the shielding bracket to the angle support using three 5/16" x 1" bolts.



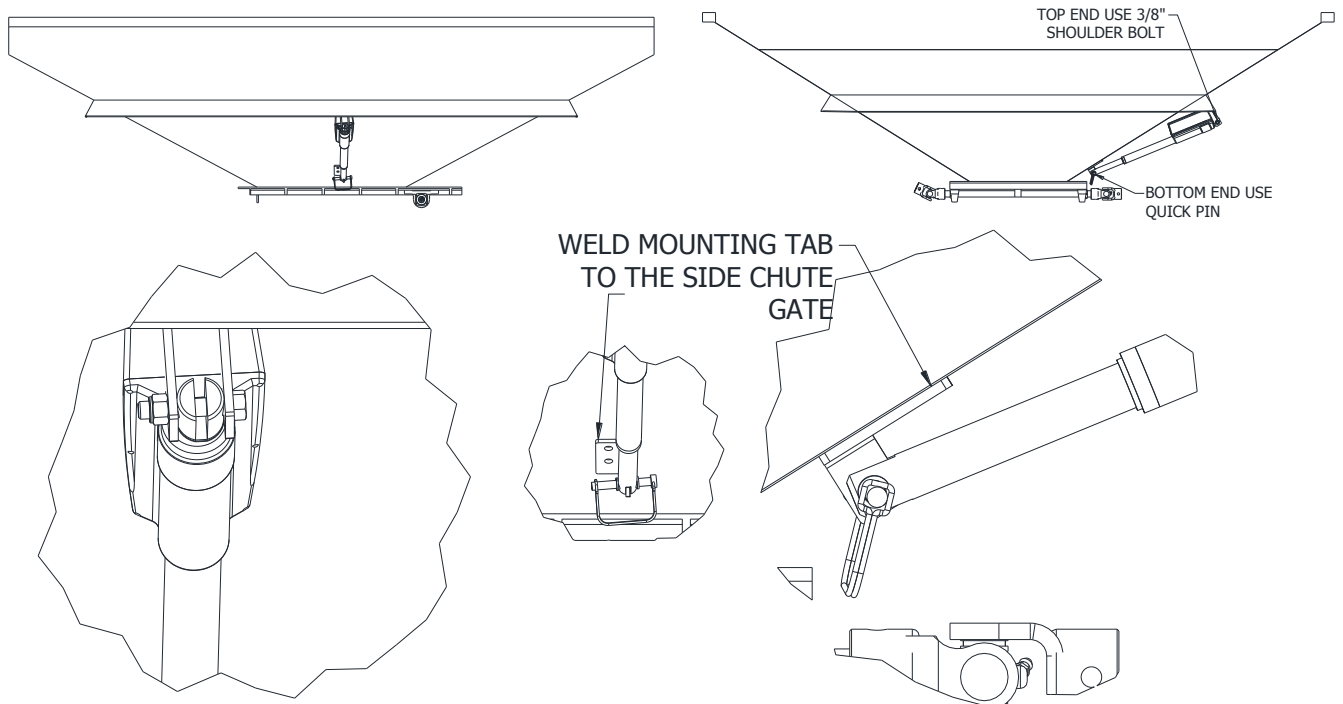
Mount the control box to the shielding mount bracket using the #10 x 1" machine screws supplied.

Remove the lever that is already attached to the side chute. The Side Chute Power Pro Opener is mounted to the bracket that held the lever's pin which kept the side chute closed.

Use one of the 3/8" x 1-1/2" shoulder bolts and 3/8" Nylok lock nuts to secure the Power Pro to the bracket. Repeat this step for each hopper.

Fifty feet of 14 Ga 2-wire cord will be supplied to connect the battery of the truck to the control box.

The power wire will be connected directly to the battery. Put the 15A circuit breaker in-line on



6/6/16

the positive wire somewhere near the battery.

The power wire will need to be split between the highway tractor and the trailer. Cut the wire to their required lengths. There will be a weather pack end on one end which is what the control box will plug into. There will also be a four way connector set included. One half can be installed on the truck and the other half installed onto the trailer.

Once there is power to the control box, plug the Power Pro units into the control box and fully extend the Power Pro until it begins to rotate rapidly. Then retract it about 1/4" or slightly less.

Use this length to determine where to weld the mounting tabs on the side chute gate. Once the position is determined mark out where the mounting tab needs to be and weld it to the side chute gate.

After the mounting tab is welded to the side chute gate connect the Power Pro to the mounting tab with the 3/8" quick pin.

Run the Power Pro wire from the control box, along the hopper angle support and up the hopper to the peak between the hoppers. A small bar to use as a hanger for the wire may be required. Weld one in place if necessary. Then run it down to the next hopper. This wire will connect to the rear side chute Power Pro on one end and the control box Wire Lead #2 on the other end. Use the supplied wire clips and lags to mount the cord to the trailer. When drilling holes through the angle supports to run wire, ensure the grommets are in place to protect the wire.

The lead hopper Power Pro will connect directly to the control box Wire Lead #1 for a two hopper system.

