



Fig. 1

### Step 1:

On both the Driver and Passenger side place a mark below the top rail approximately ¼ length of the trailer at one of the hoop/cross members from both the front and rear of the trailer. Make the mark on one side of the hoop/cross member on one side of the trailer and mark on the opposite side of the hoop/cross member on the other side of the trailer. Trailers 43' and longer, mark on each side of the hoop/cross member closest to the center of the trailer along with the first and last hoop/cross member of the trailer.

NOTE: It is recommended to use at least 2 cords on trailer lengths up to 43'. It is recommended to put 3 cords on trailer lengths over 43'

NOTE: On double wall trailers the marks must be on a row of rivets on a support brace.

NOTE: Mounting the Tarp Cords on each side of a hoop/cross member will prevent grain from pushing the cords into the grain pile when loading.

### Step 2:

#### If you have a double wall trailer and are unable to put a nut on the end of a bolt:

On the "Tarp Stop Side" make a mark approximately 4" below the top rail between 2 rivets close to the lines you marked in step one. Drape one of the cords (fig. 2) across the closed tarp of the trailer to ensure the cord is the proper length. Your marks can be adjusted accordingly. Drill a 11/32" hole at your marks. NOTE: Hole MUST be drilled on a support brace between two rivets to ensure the self-threading bolt will hold. Install 3/8" x 1-1/4" self-threading bolt, washer, (see figure 3) through the Tarp Cord and rubber washer. Rubber washer should be against the trailer wall. (Use the bottom hole on 102" wide trailers. Fold the Tarp Cord over, using both holes on 8' wide trailers) (See figure 3) Repeat for each cord being installed. Remember we are only installing the tarp stop side at this point.

#### If you are able to bolt through the trailer wall:

On the "Tarp Stop Side" make a mark approximately 4" below the top rail at the lines you marked in step one. Drape one of the cords (Fig. 2) across the closed tarp of the trailer to ensure the cord is the proper length. Your marks can be adjusted accordingly. Drill a 3/8" hole on your marks and bolt Tarp Cord (Fig 2) to the trailer using 3/8" x 1" bolts, washer, (see figure 3) through the Tarp Cord and rubber washer. Attach with 3/8" nut. Rubber washer should be against the trailer wall (Use the bottom hole on 102" wide trailers. Fold the Tarp Cord over, using both holes on 8' wide trailers) (See figure 3) Repeat for each cord being installed. Remember we are only installing the tarp stop side at this point.



Fig. 2

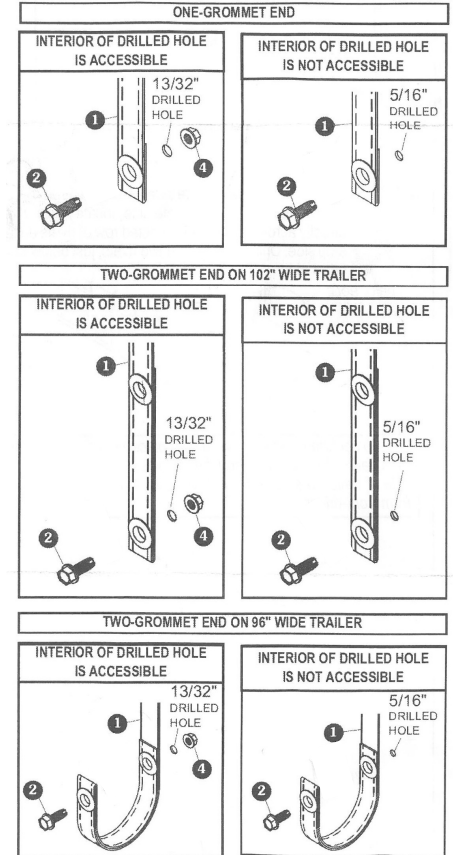


Fig. 3

**Step 3:**

Roll tarp towards locking flange side and let roll tube hang at its lowest point. Locate your marks from step one and pull the Tarp Cords over the tarp to your marks so the cord has a little tension. Secure the cord as done in Step 2.

“Never lose your tarp in the wind again”

**Required Tools:**

- Pencil or marker
- Cordless Drill
- 11/32” or 3/8” Drill Bit (See Step 2)
- 9/16” socket on drill or 2 – 9/16” Wrenches and/or socket and ratchet

For any questions or concerns please contact:

***Michel's*** Industries, Ltd.  
P.O. Box 119  
St. Gregor, Saskatchewan  
S0K 3X0 Canada  
Ph#(306)366-2184 or Fax#(306)366-2145