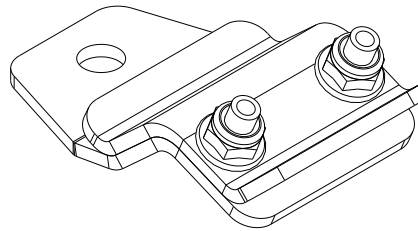


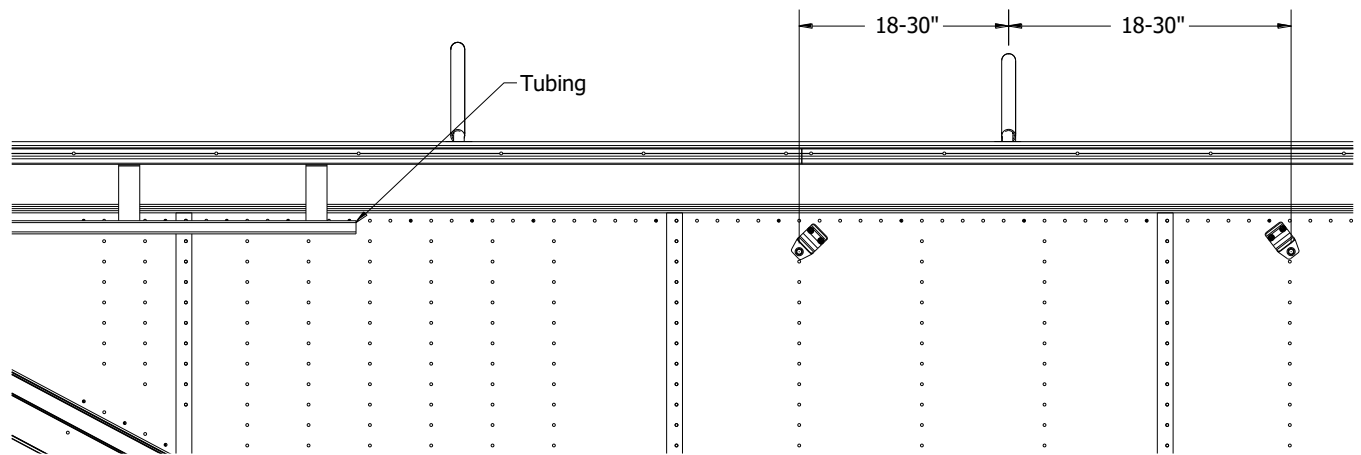
## X Tarp Saver Cord Installation

Install the (2) cords so they are roughly 1/4 to 1/3 the way in from the front and rear of the trailer. The cords have to cross over a hoop. When installing the cords have the tarp fully closed.

1. Loosely assemble the clamps by securing the 2 plates together with  $\frac{1}{4}$ " x  $\frac{3}{4}$ " carriage head bolts and flange nylon lock nuts as shown below.



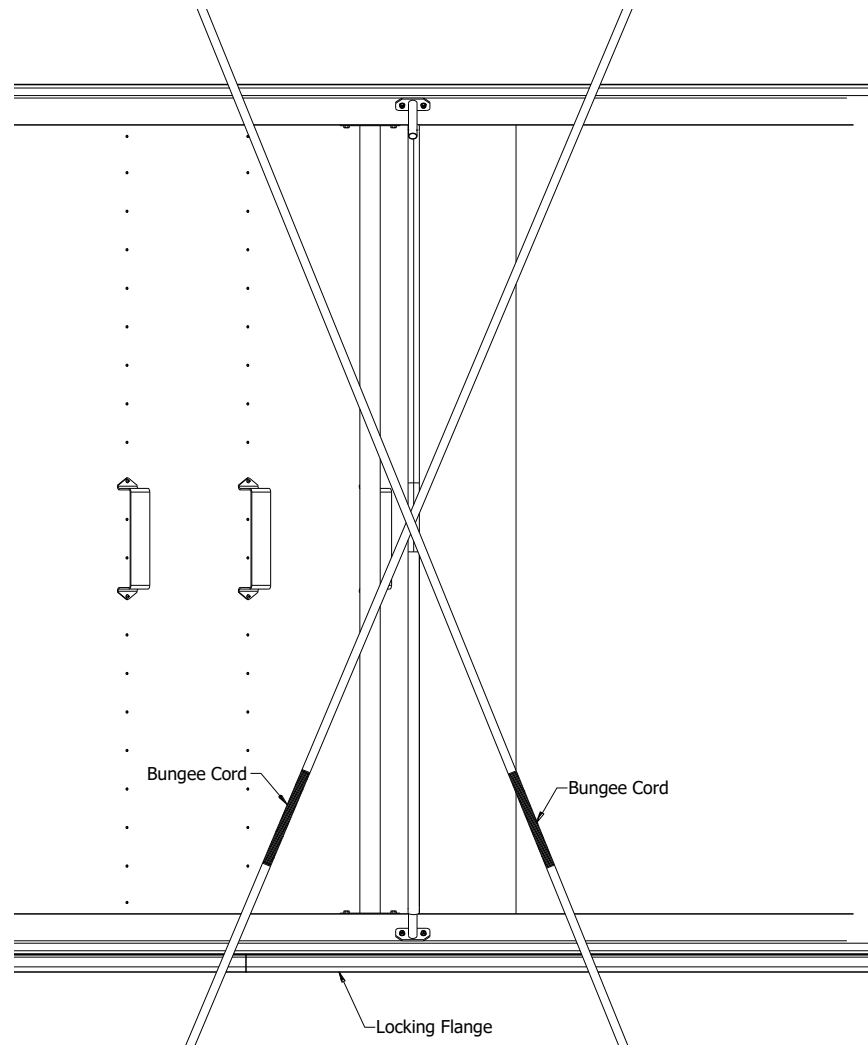
2. With the hoop selected the clamps have to be installed on the trailer. The clamps should be installed roughly 24" off center of the hoop on both sides of the trailer. Ideally you want to keep the distance on either side of the hoop as equal as possible. Depending on the trailer that distance could be as small as 18" or up to 30" off center so the clamps secure into a support rail.



- a. With dual wall aluminum trailers, the clamps need to be installed into one so the support rails that the wall is riveted to (shown above). If they are just installed in the aluminum wall, the bolts will pull out and damage your trailer. The clamps will be secured with  $\frac{3}{8}$ " self threading bolts.
  - b. Steel wall trailers you will drill through the wall itself and secure with the supplied bolts.
3. The location of the clamps from the top rail should be inline or just below the aluminum square tubing of the holdbacks (spring tension located at the front and back of the trailer). Use the same height from the top rail on both sides of the trailer.
  4. Loosely secure the clamps to the trailer by either
    - a. Drilling a  $\frac{13}{32}$ " hole thru the entire trailer wall and secure with the  $\frac{3}{8}$ " hex bolt, sealing washer, flat washer and nylon lock nut. The rubber sealing washer goes between the trailer wall and the clamp.
    - b. Drill a  $\frac{5}{16}$ " hole into the support rail and secure with the  $\frac{3}{8}$ " x 1- $\frac{1}{4}$ " self threading bolts and sealing washer. The rubber sealing washer goes between the trailer wall and the clamp.

Aug 2/24

5. With the tarp closed, place the tarp saver cord over the trailer. Have the 2 ends with the bungee cord on the locking side of the trailer. Position the cord so the 'X' crosses the middle of the hoop.



6. Feed the straps into the clamps by going between the 2 plates. On the side without the bungee cord, tighten the clamps when the 'X' is at the middle of the hoop.
7. On the bungee side, pull the strap until the slack is removed. Continue to pull the strap so the bungee cord part of the cord stretches 2 to 3" in length and then secure position with the clamp.
8. Fully secure the clamps to the trailer so they match the angle of the straps as best as possible.
9. Roll the tarp open and close to ensure the straps stay roughly in the middle of the hoop and that the cord is not stretched too much preventing the roll tube from going over the locking flange when closing the tarp. Adjust the length and or position of the straps if necessary.
10. The ends of the straps can be
  - a. Cut off and use a lighter to melt the ends to prevent fraying.
  - b. Fold them over the clamp and fold back up on itself neatly and secure with a zip tie or electrician tape to allow for adjustment in the future.